

双面印刷，之字形折叠，112\*112mm

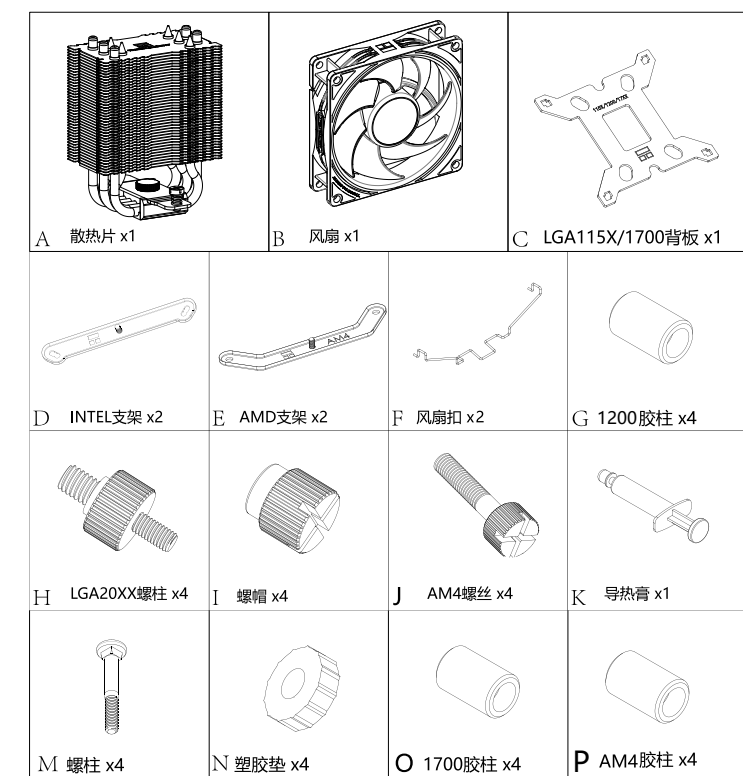
**THERMALRIGHT®**  
Low Temperature high Performance

**安装说明**  
Assassin King 90系列

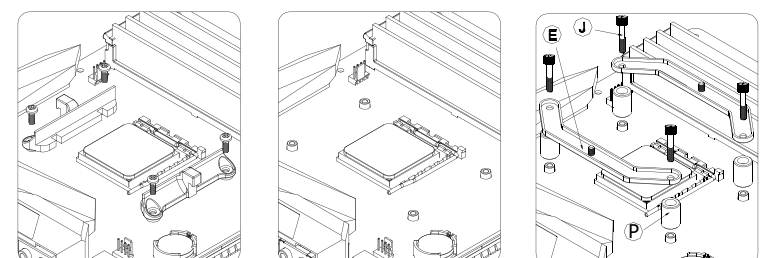
! 安装前请先去除铜底保护膜

www.thermalright.com

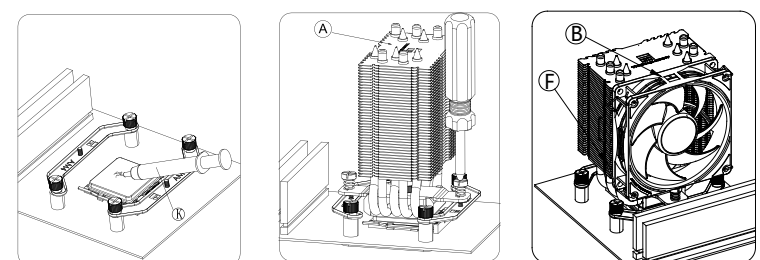
配件清单



AMD AM4/AM5

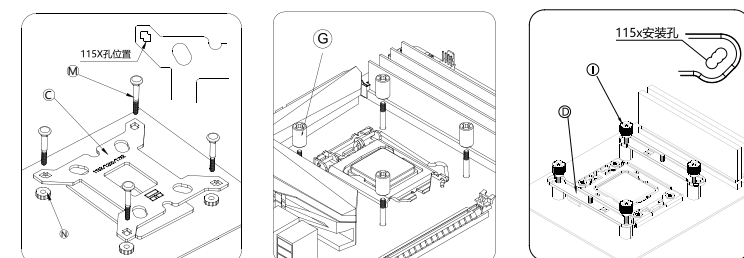


移除AMD原装塑胶支架，保留背板；使用AM4螺丝将AMD支架固定到背板

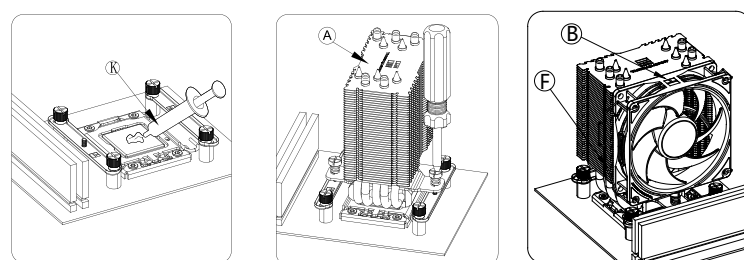


涂好导热膏，然后用螺丝刀锁好主体，再用风扇线扣固定风扇

INTEL LGA115X/1200

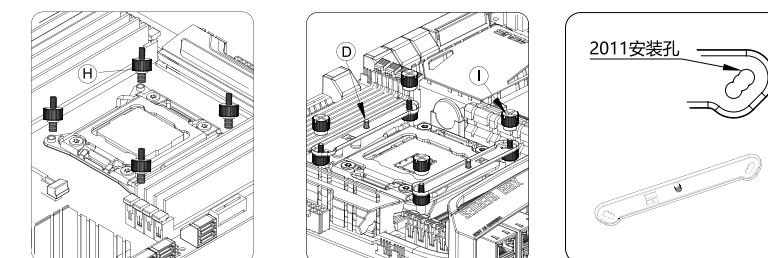


将螺丝对应LGA115X孔位穿过背板上塑胶垫放置在主板背面，然后从正面放置胶柱，支架再用螺帽固定住INTEL支架。

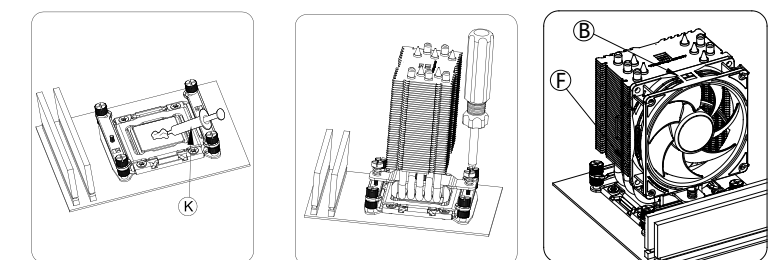


涂好导热膏，然后用螺丝刀锁好主体，再用风扇线扣固定风扇

INTEL LGA2011/2066

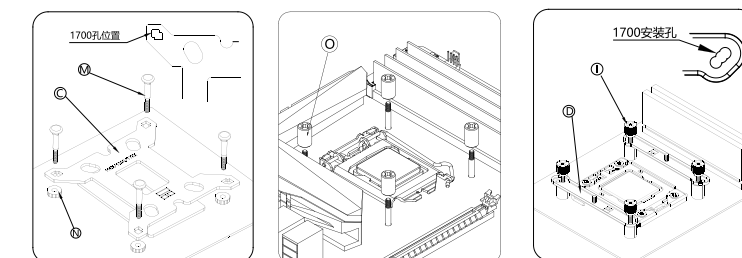


将LGA20XX螺柱拧到主板，然后放置支架，再用螺帽固定住INTEL支架。

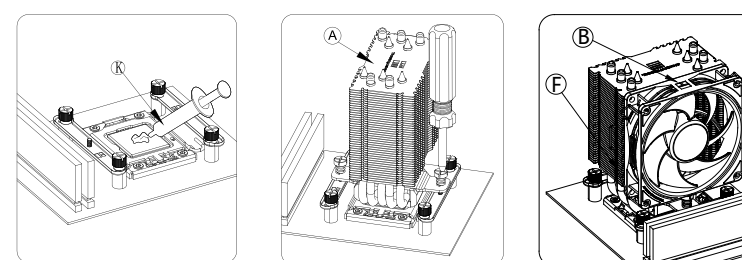


涂好导热膏，然后用螺丝刀锁好主体，再用风扇线扣固定风扇

INTEL LGA1700/1851

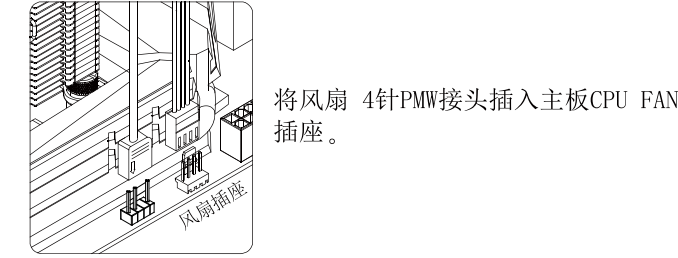


将螺丝对应LGA1700孔位穿过背板上塑胶垫放置在主板背面，然后从正面放置胶柱，支架再用螺帽固定住INTEL支架。

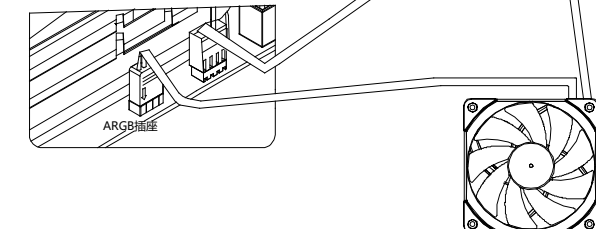


涂好导热膏，然后用螺丝刀锁好主体，再用风扇线扣固定风扇

风扇接线



将风扇 4针PWM接头插入主板CPU\_FAN 插座。



如果风扇有ARGB灯效，请将ARGB 3针（5V）插入主板对应ARGB灯效插座或者控制器。

双面印刷，之字形折叠，112\*112mm

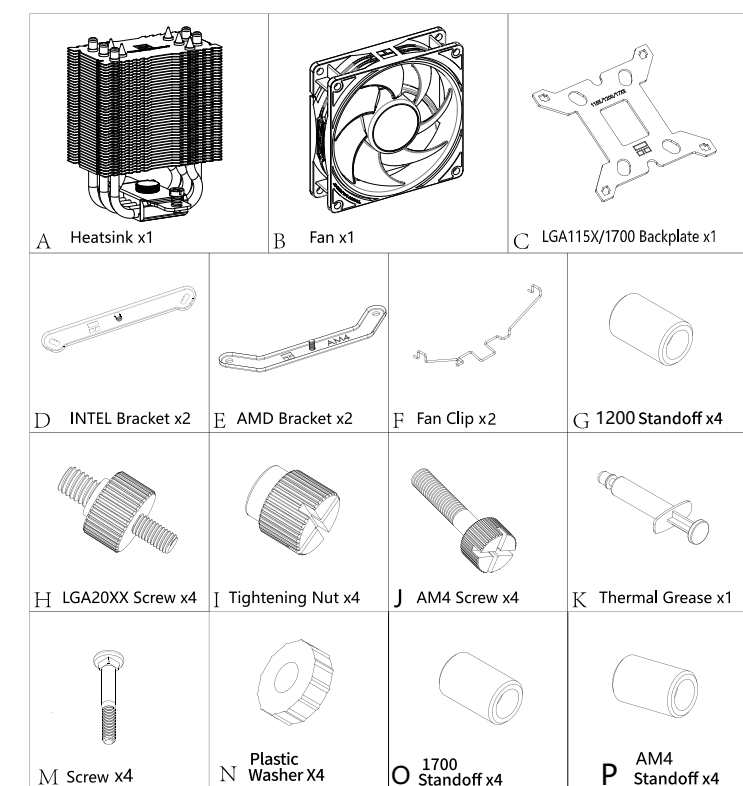
**THERMALRIGHT®**  
Low Temperature high Performance

**INSTALLATION GUIDE**  
Assassin King 90 Series

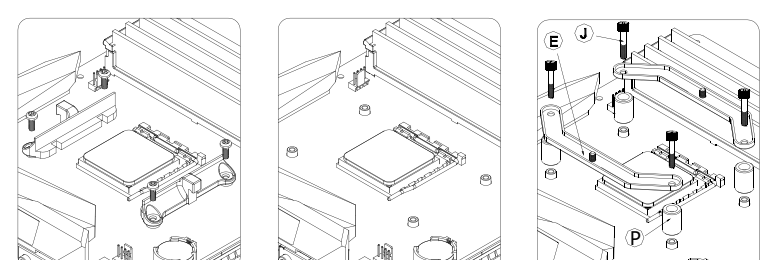
Please remove protective sticker before install

www.thermalright.com

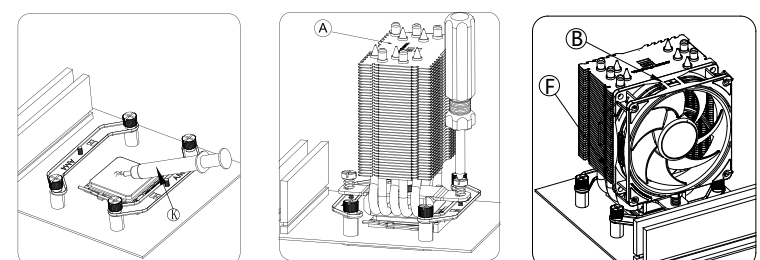
parts list



AMD AM4/AM5

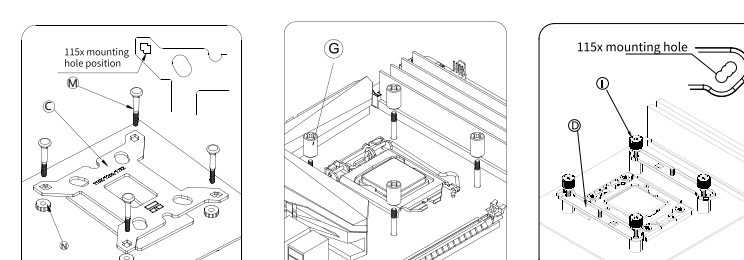


REMOVE AMD AM4 plastic brackets, KEEP the back plate, install AM4 metal brackets with AM4 screws and AM4 plastic standoffs

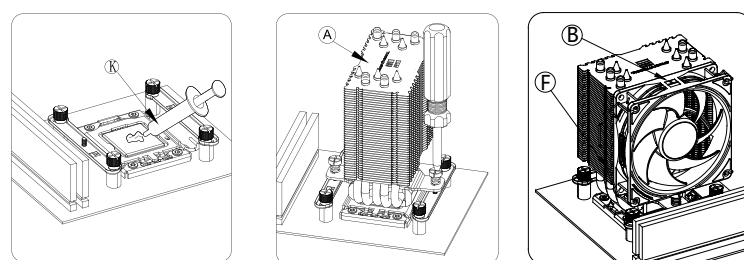


Apply thermal grease on CPU, install the heatsink with a screw driver, and install fans on heatsink with fan clips

INTEL LGA115X/1200

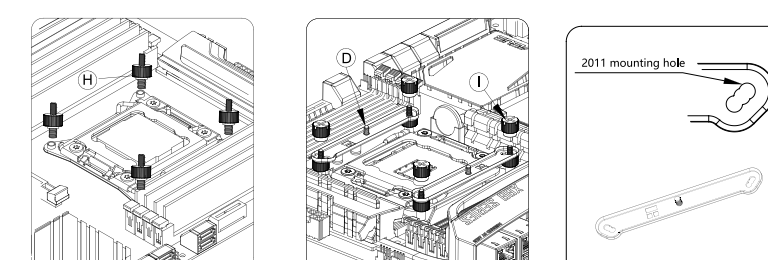


Install the INTEL back plate from the back of motherboard, then place plastic standoffs from front side of motherboard, install INTEL metal brackets with screws

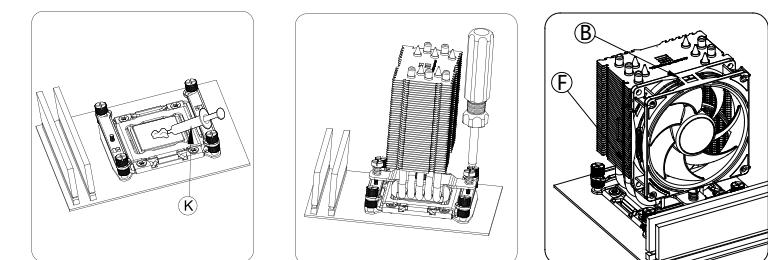


Apply thermal grease on CPU, install the heatsink with a screw driver, and install fans on heatsink with fan clips

INTEL LGA2011/2066

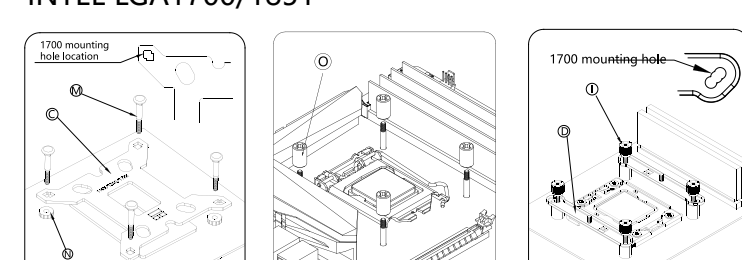


Install LGA20XX screws into motherboard socket mounting holes, then secure INTEL brackets with nuts.

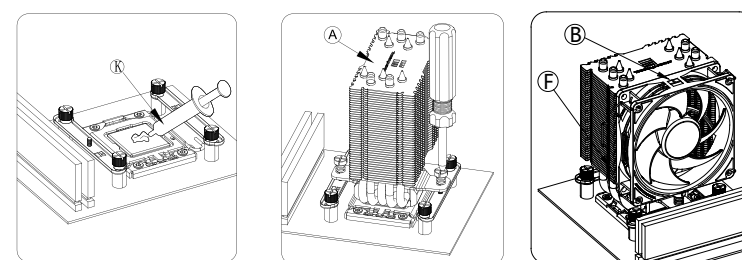


Apply thermal grease on CPU, install the heatsink with a screw driver, and install fans on heatsink with fan clips

INTEL LGA1700/1851

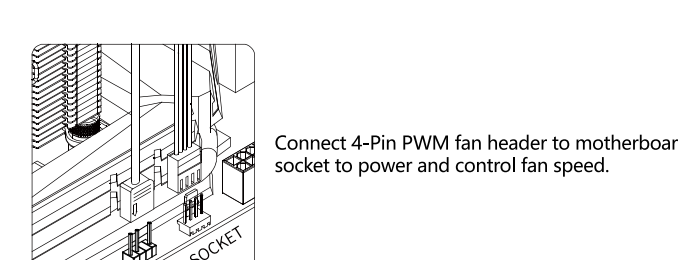


Install the LGA1700 back plate from the back of motherboard, then place plastic standoffs from front side of motherboard, install LGA1700 metal brackets with screws

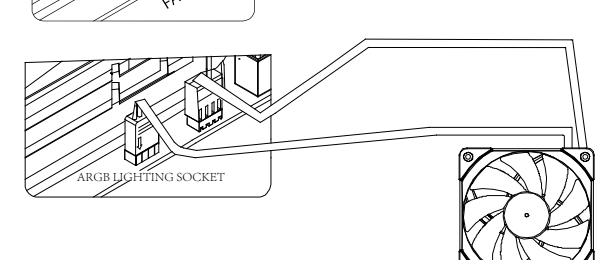


Apply thermal grease on CPU, install the heatsink with a screw driver, and install fans on heatsink with fan clips

Fan Wiring



Connect 4-Pin PWM fan header to motherboard CPU\_FAN socket to power and control fan speed.



For Fans with Addressable-RGB lighting, connect 3-Pin ARGB lighting header to motherboard 3-Pin +5V ARGB lighting socket to control lighting effect.