

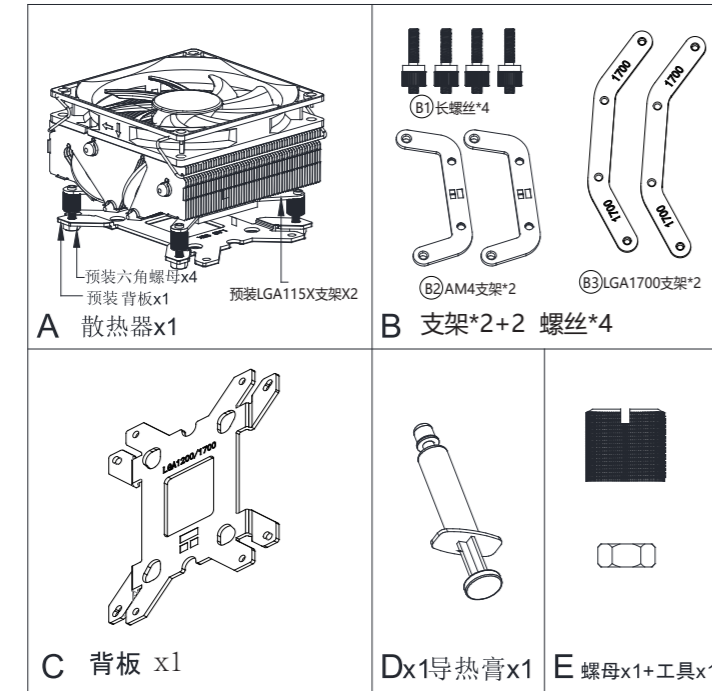


### 安装说明

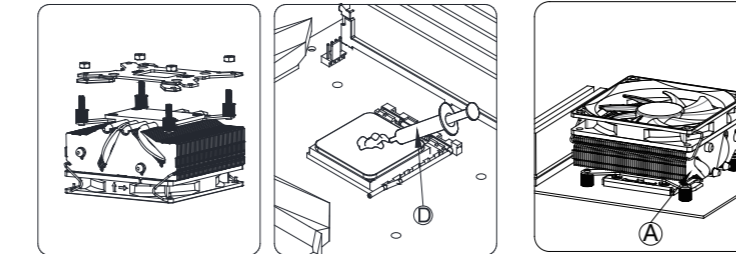
TR-AXP90X SERIES

www.thermalright.com

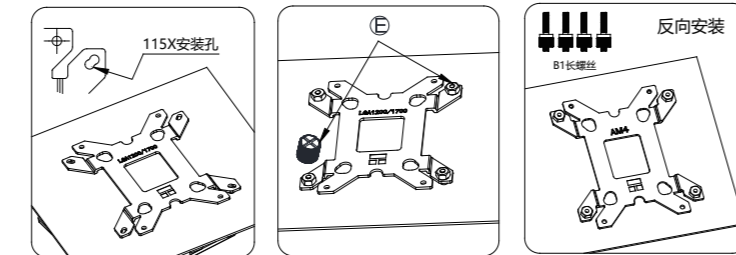
#### 配件清单



#### INTEL LGA 115X/1200

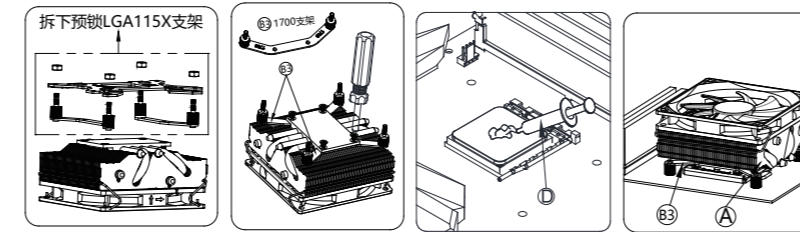


取下散热器上预装的螺母X4、背板;CPU涂好导热膏将散热器四个支架螺丝穿过主板孔,压住CPU

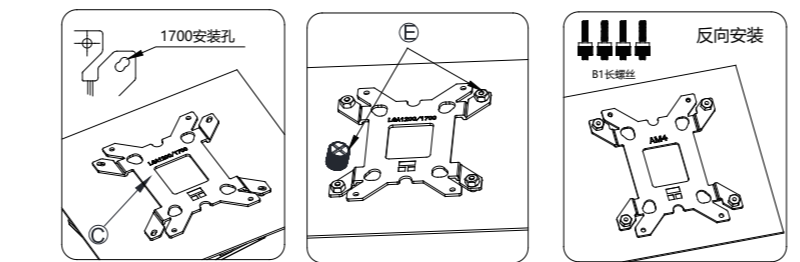


在主板的背面安装背板,注意背板方向:AM4为贴合主板面,用螺母辅助工具将螺母固定主板底面螺丝,注意背板贴合主板方向必须粘贴绝缘片。如遇到主板背部有供电干涉的情况,请使用B1长螺丝反向安装背板,LGA 115X为贴合主板面,将螺母固定主板底面螺丝。

#### INTEL LGA 1700

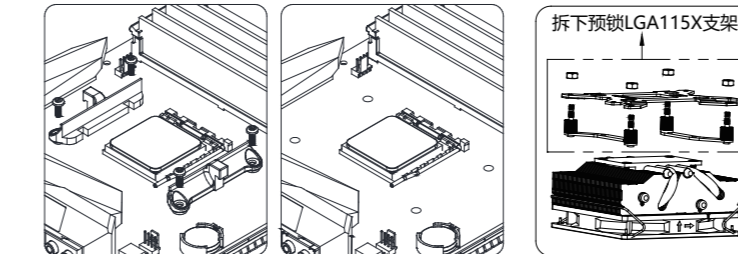


拆下散热器预装的背板及LGA115X的支架,将LGA115X的双头螺丝换装在LGA1700支架上,将CPU涂好导热膏,将预锁好的散热器按对应的孔位装在主板上,

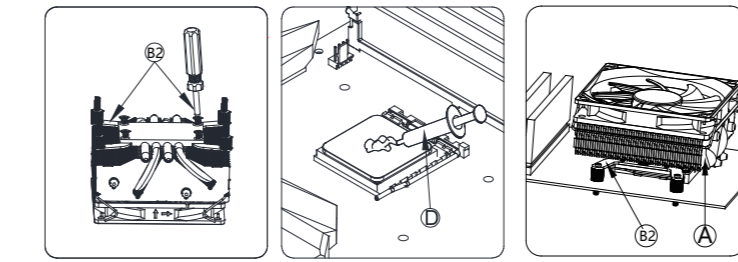


压住CPU散热器在主板的背面安装背板,注意背板方向:AM4为贴合主板面,用螺母辅助工具将螺母固定主板底面螺丝,注意背板贴合主板方向必须粘贴绝缘片。如遇到主板背部有供电干涉的情况,请使用B1长螺丝反向安装背板,LGA 115X为贴合主板面,将螺母固定主板底面螺丝。

#### AMD AM4

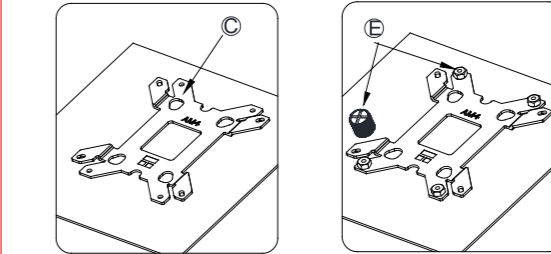


用螺丝刀拆除主板原装塑胶支架、背板,拆除散热器上预装的螺母x4、背板、支架x2。

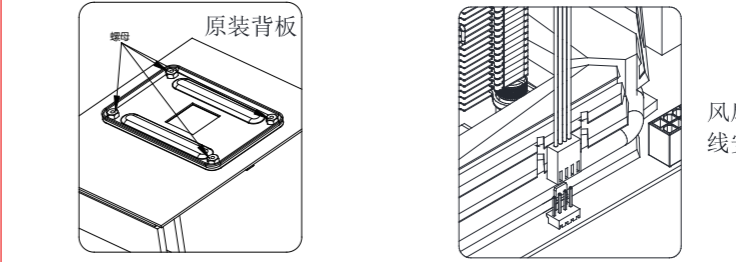


将配送支架x2用四枚小螺丝穿过散热器铜底,将配送支架x2与散热器固定,CPU涂好导热膏,将散热器四个支架螺丝穿过主板孔散热器铜底压住CPU。

#### AMD AM4

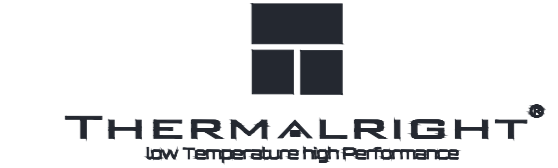


在主板的背面安装背板,背板方向:LGA 115X为贴合主板面,用螺母辅助工具将螺母固定主板底面螺丝,注意背板贴合主板方向必须粘贴绝缘片



如遇原装AM4背板不能拆卸需将配件包中支架x2上的螺丝直接穿过AM4原装背板,将螺母固定主板底面螺丝。

将风扇4针接头插入主板CPU\_FAN4针插座



- 温馨提示:
- 1、使用散热器前一定要先揭去铜底保护膜。
  - 2、注意双平台背板与主板的贴合方向。
  - 3、背板粘贴绝缘片一面为贴合主板方向。

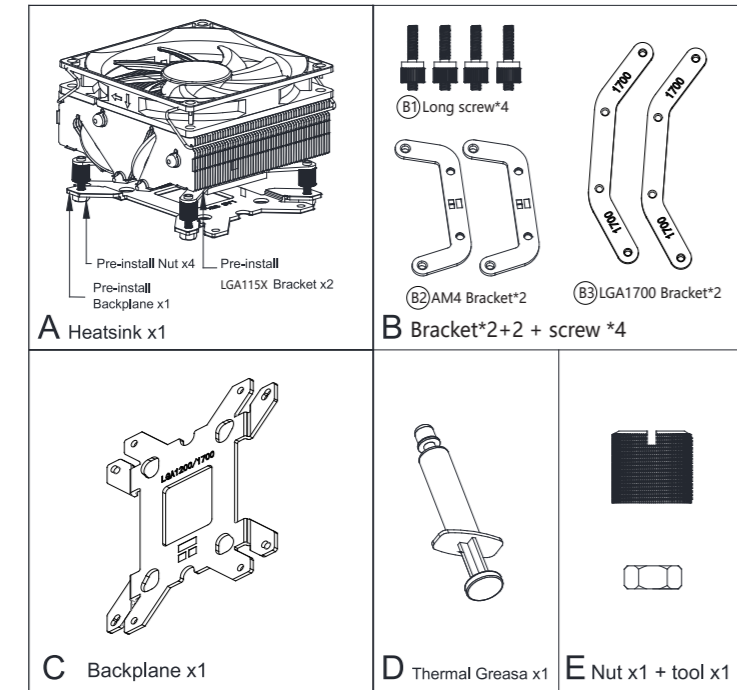


### INSTALLATION GUIDE

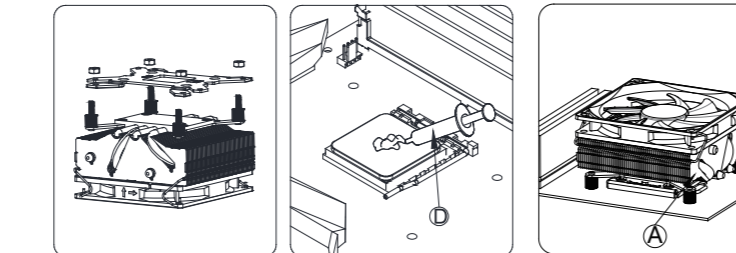
TR-AXP90X SERIES

www.thermalright.com

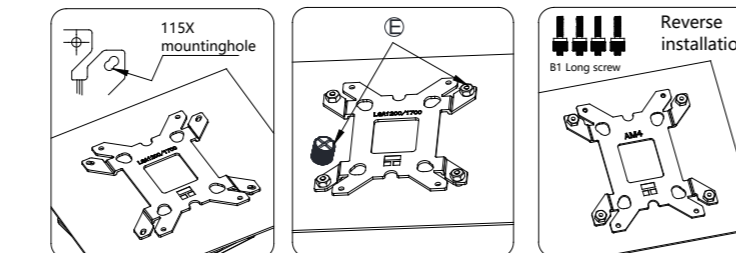
#### parts list



#### INTEL LGA 115X/1200

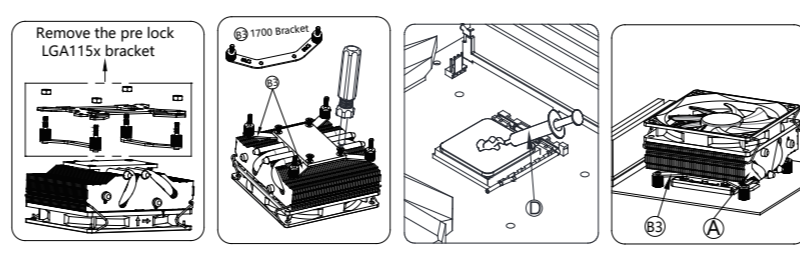


Remove the pre-installed nut X4、back plate on the radiator; CPU apply the heat conduction paste to push the four support screws of the radiator through the main board hole and press the CPU

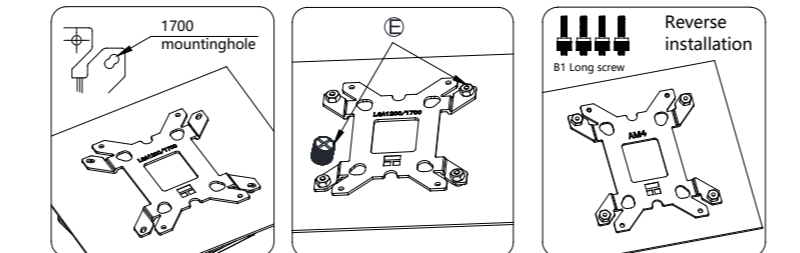


Install backplane on the back of the motherboard, and pay attention to the backplane direction: AM4 is the sticker Close the main board surface, and use the nut auxiliary tool to fix the screw on the bottom of the main board. Pay attention to the direction that the back board fits the main board, and the insulation sheet must be pasted.If there is power supply interference on the back of the motherboard, please use B1 long screw install the backplane reversely. LGA 115x is to fit the motherboard surface, and fix the nuts on the bottom screw of the motherboard.

#### INTEL LGA 1700

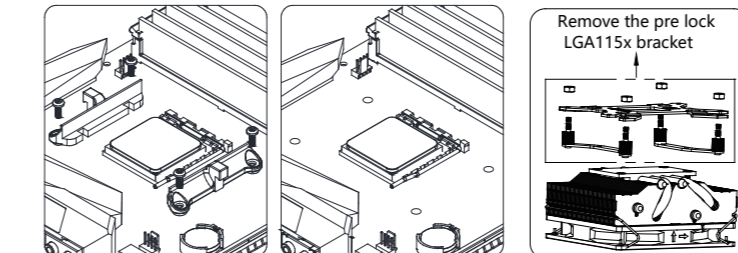


Remove the pre installed back plate of the radiator and the support of lga115x, and replace the double head screws of lga115x, On the lga1700 bracket, coat the CPU with heat transfer paste, and press the pre locked radiator according to the corresponding The hole position is installed on the main board

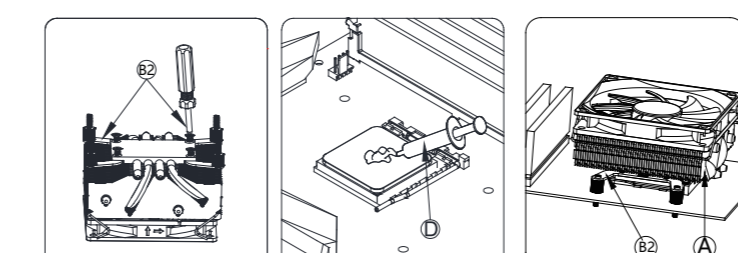


Install backplane on the back of the motherboard, and pay attention to the backplane direction: AM4 is the sticker Close the main board surface, and use the nut auxiliary tool to fix the screw on the bottom of the main board. Pay attention to the direction that the back board fits the main board, and the insulation sheet must be pasted.If there is power supply interference on the back of the motherboard, please use B1 long screw install the backplane reversely. LGA 115x is to fit the motherboard surface, and fix the nuts on the bottom screw of the motherboard.

#### AMD AM4

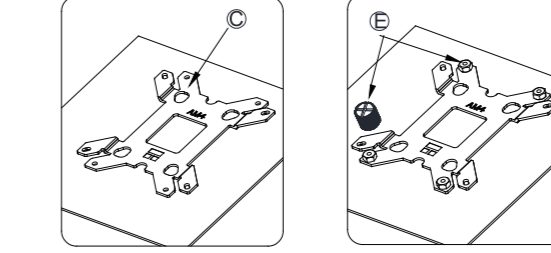


Remove the original plastic support and back plate of main board with screwdriver, remove the pre-installed nut x4、back plate, support x2. on radiator

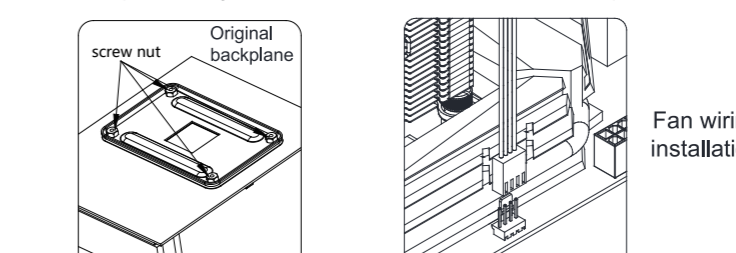


The distribution support x2 is x2 through the copper bottom of the radiator with four small screws, the distribution support x2 is fixed with the radiator, the heat conduction paste is applied CPU, and the four support screws of the radiator are pressed through the copper bottom of the radiator in the main board hole CPU, pressed

#### AMD AM4



Install backplane on the back of the motherboard. The backplane direction: LGA 115x is to fit the motherboard surface. Use the nut auxiliary tool to fix the screws on the bottom of the motherboard. Pay attention to the direction of the backplane sticking to the motherboard, the insulation sheet must be pasted



If there is power supply interference on the back of the motherboard, please install the backplane reversely. LGA 115x is to fit the motherboard surface, and fix the nuts on the bottom screw of the motherboard.

Insert fan 4-pin connector into main board CPU\_FAN4 pin socket



- Reminder:
- 1.Remove the copper bottom protective film before using the radiator.
  - 2.Pay attention to the fitting direction of the backplane and the motherboard.
  - 3.One side of the back board pasted with insulating sheet is in the direction of the main board