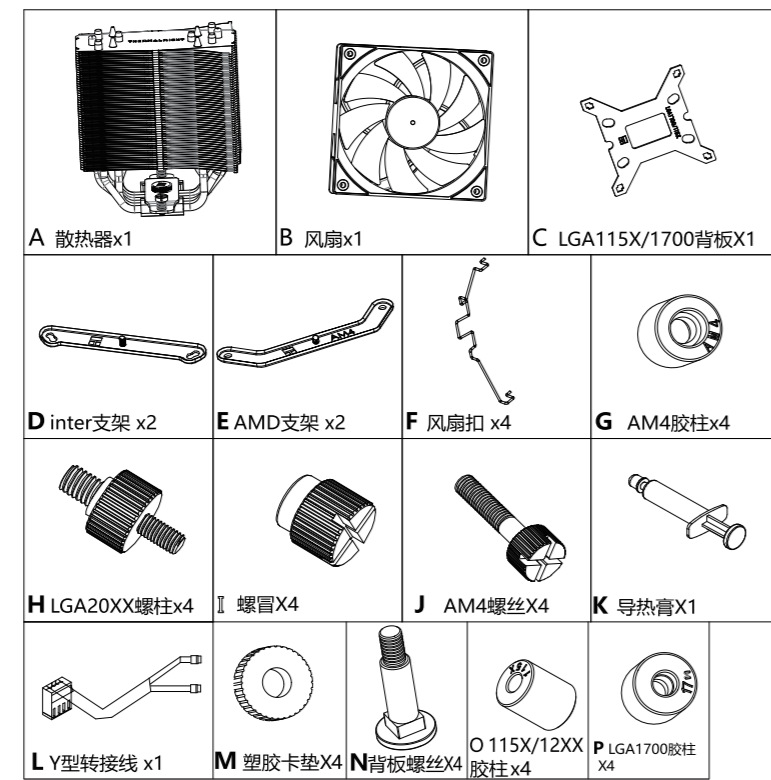
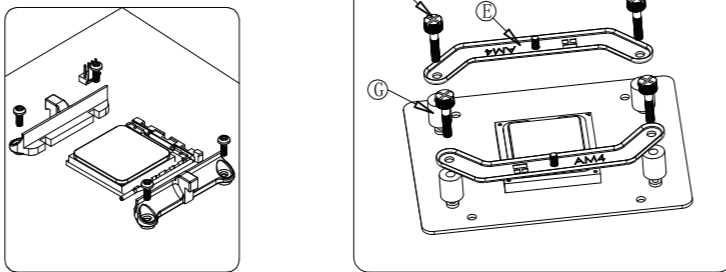


安装说明
Ultra-120Extreme Rev.4
Series

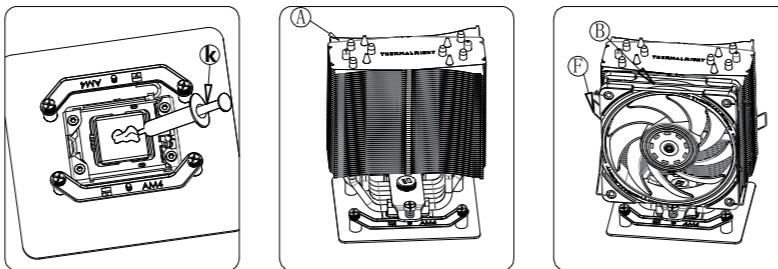
配件清单



AMD AM4

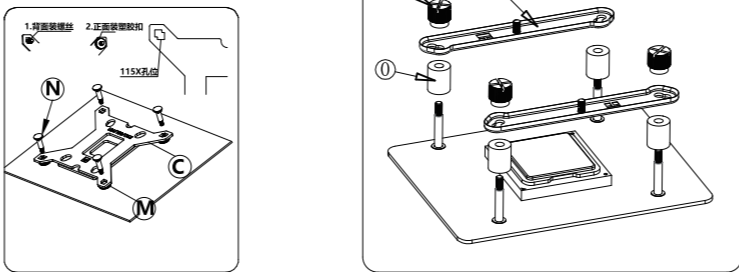


移除 AMD 原装塑胶支架, 保留背板; 使用AM4螺丝将AMD支架固定到背板

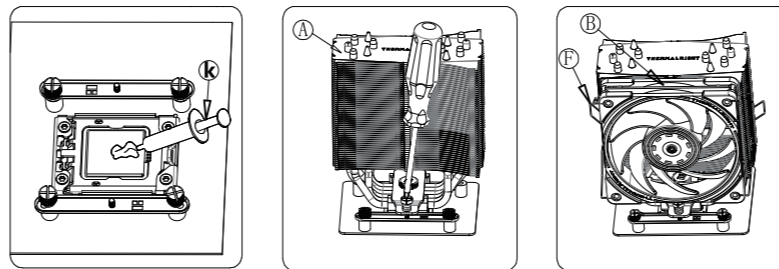


涂好导热膏, 然后用螺丝刀锁好主体, 再用风扇线扣固定风扇。

INTEL LGA115X

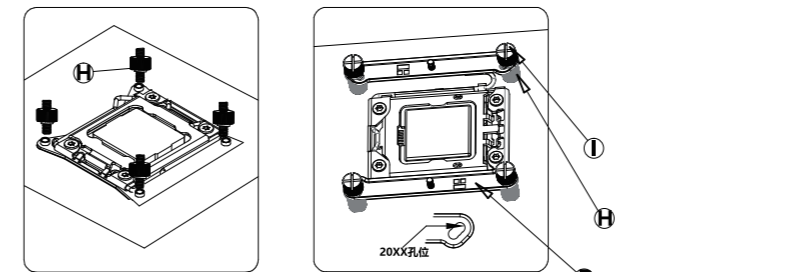


先将背板按图示装入115X孔位再用O形塑胶垫卡住, 再将背板放置在主板背面, 然后放置115X胶柱, 再用螺帽固定住支架 (支架孔位对准115X)。

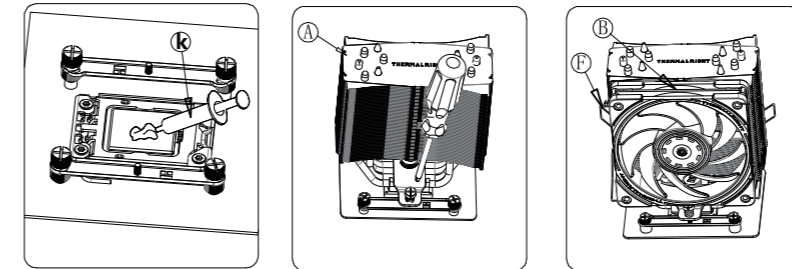


涂好导热膏, 然后用螺丝刀锁好主体, 再用风扇线扣固定风扇。

INTEL LGA20XX

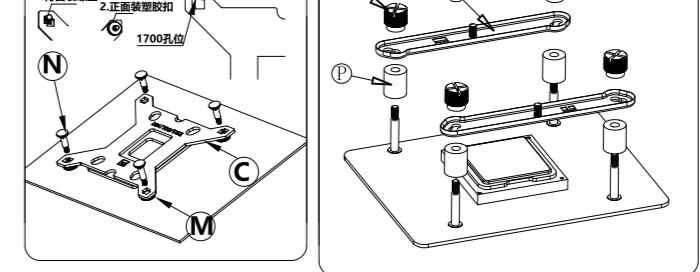


将LGA20XX螺柱拧到主板, 然后放置支架, 再用螺帽固定住INTEL支架。

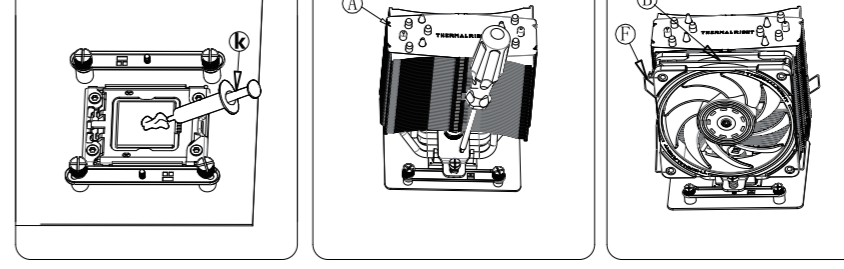


涂好导热膏, 然后用螺丝刀锁好主体, 再用风扇线扣固定风扇。

LGA1700

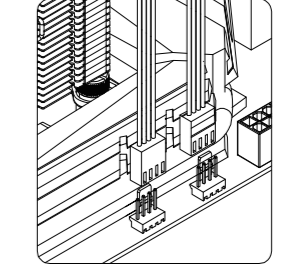


先将背板按图示装入1700孔位再用O形塑胶垫卡住, 再将背板放置在主板背面, 然后放置1700塑胶柱, 再用螺帽固定住支架 (支架孔位对准1700)。

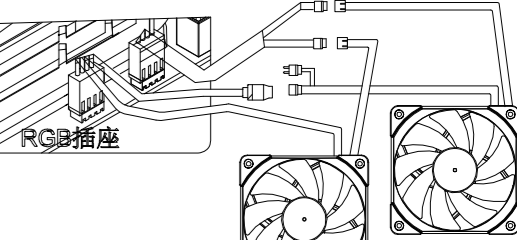


涂好导热膏, 然后用螺丝刀锁好主体, 再用风扇线扣固定风扇。

风扇接线



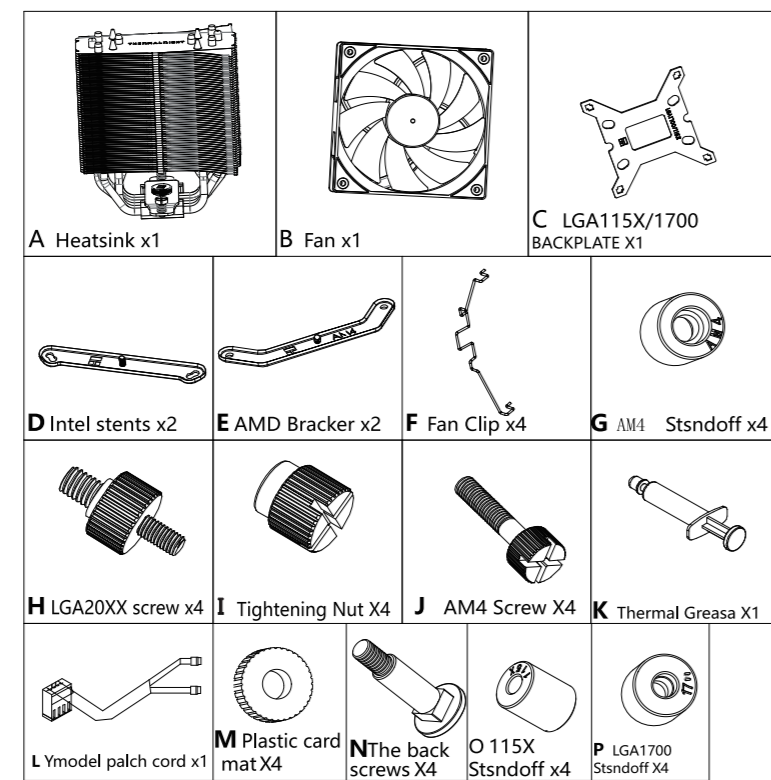
将风扇 4针PWM接头插入主板CPU FAN 插座
如使用双风扇, 请使用Y型转接线。



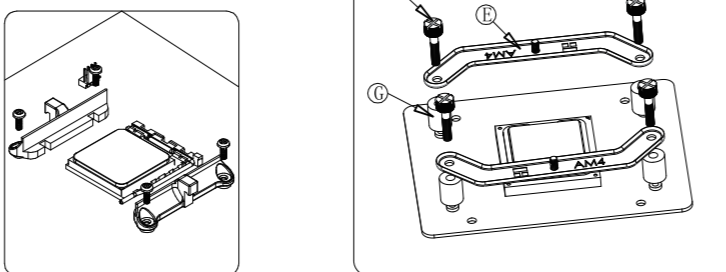
如风扇有RGB灯效 请将RGB灯效:
针 (5V) /4针 (12V) 插入主板对应 RGB灯
效插座或者控制器, 多风扇之间为串联。

INSTALLATION GUIDE
Ultra-120Extreme Rev.4
Series

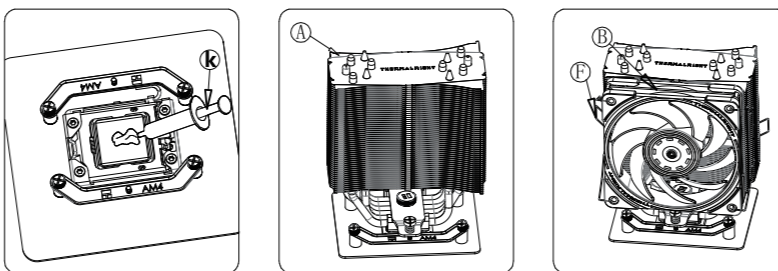
Parts list



AMD AM4

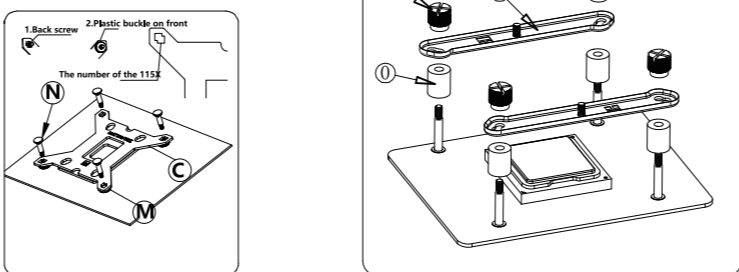


Remove plastic retention bracket, but keep the backplate; secure the brackets using the AM4 screws

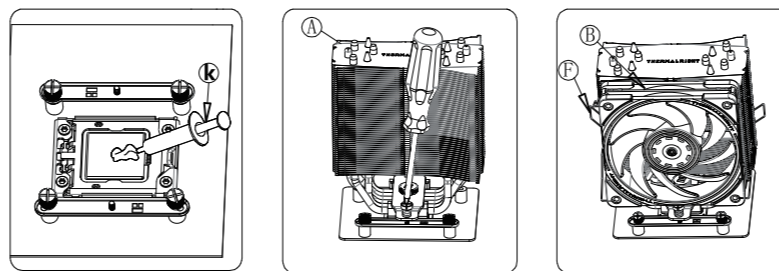


Apply a thin layer of thermal grease; and then secure heatsink

INTEL LGA115X

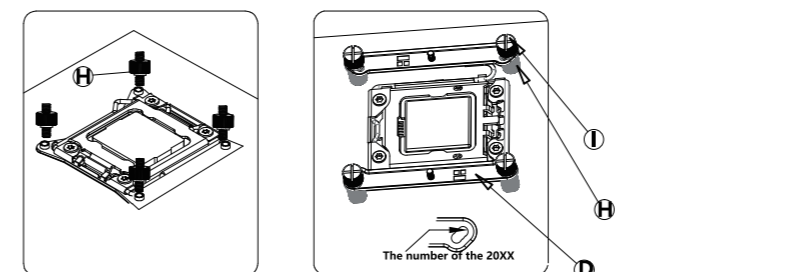


Install the backplane into the 115X hole as shown in the diagram, and then jam the backplane with the O-shaped plastic pad. Then place the backplane on the back of the motherboard, place the 115X rubber column to tighten the stud, and then fix the support with nuts (the support hole is aligned with 115X).

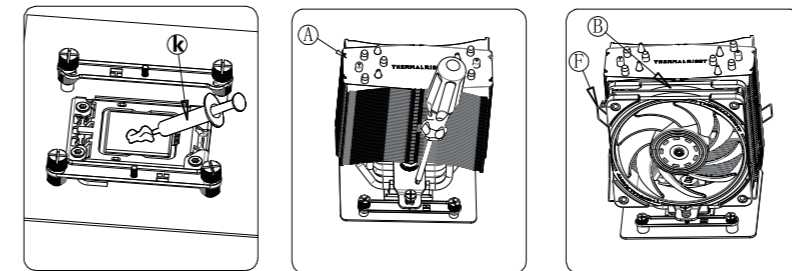


Apply a thin layer of thermal grease; and then secure heatsink.

INTEL LGA20XX

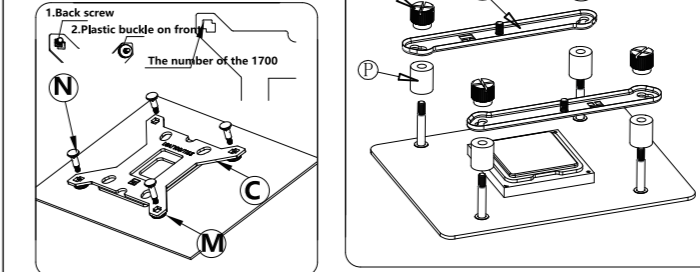


Thread in the LGA20XX screws; put on the brackets and then tightening with nuts.

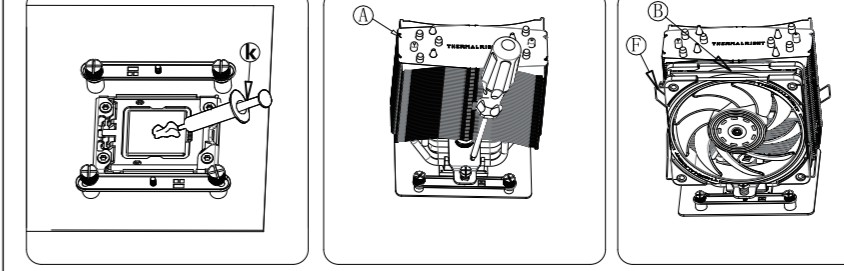


Apply a thin layer of thermal grease; and then secure heatsink.

LGA1700

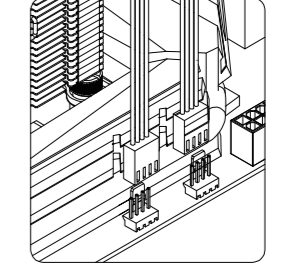


Install the backplane into the 1700 hole as shown in the diagram, and then use the O-shaped plastic pad to jam the backplane. Then place the backplane on the back of the motherboard, place the 1700 plastic column, and fix the support with screws (the support hole is aligned with 1700).

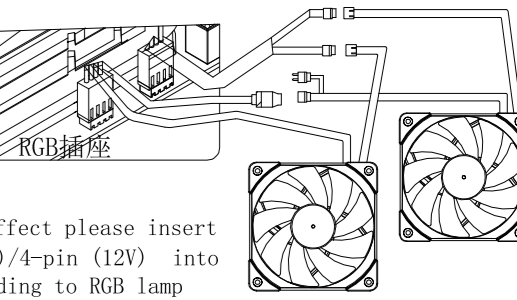


Apply a thin layer of thermal grease; and then secure heatsink.

Fan wiring



Insert the 4-pin PWM connector of the FAN into the CPU FAN socket of the motherboard. For double fans, please use y-type connector.



if the fan has RGB lamp effect please insert RGB lamp effect 3-pin (5V)/4-pin (12V) into the motherboard corresponding to RGB lamp effect socket or controller, and connect multiple fans in series